

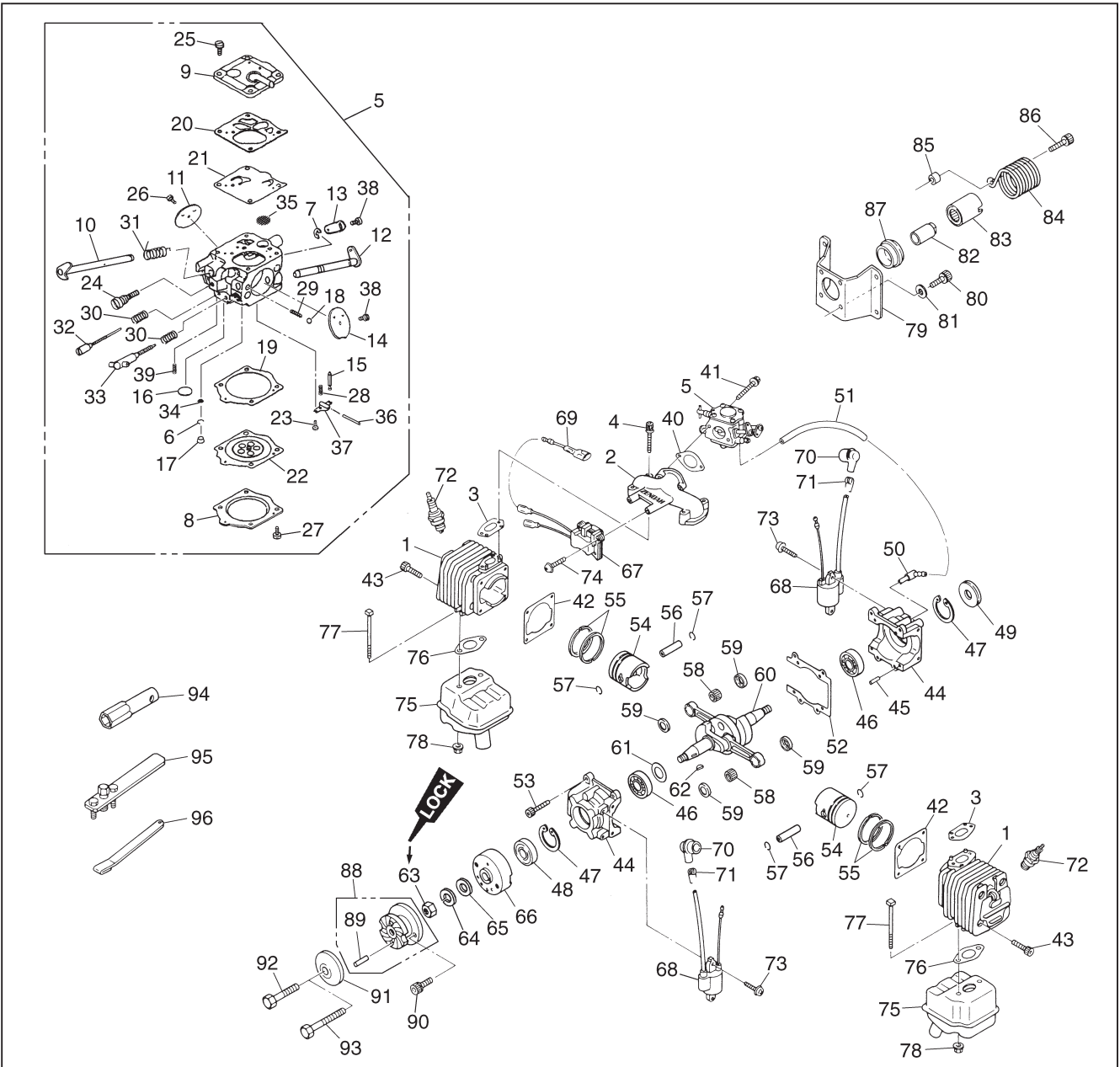
10. Specifications

Model	G800BPU · G800BPU-1
Type	Air cooled two stroke cycle opposed cylinder type gasoline engine
Displacement	79.9cc (4.88cu. in)
Bore x Stroke x Number of cylinder	40.5mm x 31mm x 2 (1.60 in x 1.22 in x 2)
Compression ratio	8.1 : 1
Maximum output	5.52kW/10000rpm [4.41kW/10000rpm with Muffler]
Operating engine speed	1800 ~ 10000rpm
Weight	3.5kg (7.9lbs) with mufflers & spring starter
Ignition system	CDI type flywheel magneto
Carburetor	WALBRO WJ-64
Fuel	Gasoline oil mixture 25 ~ 40 : 1
Spark plug	CHAMPION RCJ-7Y
Recommended propeller sizes (inch)	26 x 8 ~ 10, 24 x 10 ~ 12, 22 x 12 ~ 14

Specifications are subject to change without notice.

11. Parts List

G800BPU, G800BPU-1



G800BPU, G800BPU-1

Index No.	Parts No.	Description	Q' ty /unit	Index No.	Parts No.	Description	Q' ty /unit
1	T2080-12110	Cylinder	2	50	2670-21250	• Elbow	1
2	T2080-14110	Manifold	1	51	1065-81100	• Pipe	1
3	577 46 07-01	Gasket, inlet	2	52	2898-21310	Gasket, crankcase	1
4	3310-72150	Bolt	4	53	01252-30520	Bolt	4
5	2898-81000	Carburetor assy, WJ-64	1	54	T2002-41110	Piston	2
6	3304-81441	• Ring	1	55	8488C41200	Ring, piston	4
7	1148-81390	• Ring	1	56	2850-41310	Pin, piston	2
8	2898-81120	• Cover	1	57	1300-41320	Snap ring	4
9	2898-81130	• Cover	1	58	2850-41410	Bearing	2
10	2898-81150	• Shaft	1	59	2850-41510	Thrust washer	4
11	2898-81340	• Valve	1	60	2898-42000	Crankshaft comp	1
12	2898-81170	• Shaft	1	61	1300-42410	Shim	0~2
13	2898-81440	• Lever	1	62	1000-43240	Key	1
14	2898-81180	• Valve	1	63	1100-43231	Nut	1
15	3310-81311	• Valve	1	64	01641-21016	Washer	1
16	2898-81450	• Plug	1	65	0290-21025	Washer	1
17	3360-81440	• Plug	1	66	1490-71110	Rotor	1
18	2898-81220	• Ball	1	67	2629-71210	Source coil	1
19	2898-81240	• Gasket	1	68	2629-71311	Ignition coil	2
20	2898-81230	• Gasket	1	69	2898-71510	Cord	1
21	2898-81260	• Diaphragm	1	70	2850-72110	Cap, plug	2
22	2898-81270	• Diaphragm	1	71	1400-72121	Spring	2
23	3310-81240	• Screw	1	72	1630-73110	Spark plug	2
24	2898-81330	• Screw	1	73	0263-30414	Screw	4
25	2898-81140	• Screw	4	74	0260-30422	Screw	2
26	1492-81560	• Screw	1	75	2898-15110	Muffler	2
27	3310-81351	• Screw	4	76	T2100-15210	Gasket, muffler	2
28	2898-81370	• Spring	1	77	3356-15220	Bolt	4
29	2898-81350	• Spring	1	78	2850-15230	Nut	4
30	1491-81160	• Spring	2	79	2898-74110	Mount	1
31	2898-81390	• Spring	1	80	01252-30614	Bolt	3
32	2898-81420	• Needle	1	81	3310-71150	Washer	4
33	2898-81410	• Needle	1	*82	2699-75110	Boss	1
34	1282-81560	• Screen	1	*83	2699-75200	Clutch comp	1
35	3306-81380	• Screen	1	*84	2699-75310	Spring	1
36	7620-81610	• Pin	1	*85	2699-75320	Collar	1
37	2898-81250	• Lever	1	*86	01252-30625	Bolt	1
38	2880-81470	• Screw	2	*87	2699-75410	Pad	1
39	3356-81430	• Plug	1	88	2628-51101	Hub. propeller comp	1
40	2898-14131	Gasket, carburetor	1	*89	04025-00312	• Pin, spring	2
41	01252-30550	Bolt	2	90	3544-11510	Bolt	2
42	2898-14210	Gasket, cylinder	2	91	2629-51310	Hub, washer	1
43	01252-30520	Bolt	8	92	2629-51410	Bolt	1
44	2898-21001	Crankcase assy (No.45~51)	1	93	2629-91510	Bolt	1
45	2629-21130	• Pin	4	94	1110-91320	Socket	1
46	06030-06202	• Bearing	2	95	1490-96101	Puller assy (Optional)	1
47	04065-03515	• Snap ring	2	96	2670-96220	Stopper (Optional)	1
48	06034-06202	• Bearing	1				
49	1400-21220	• Oil seal	1				

* : Without for G800BPU-1.