

10. Specifications

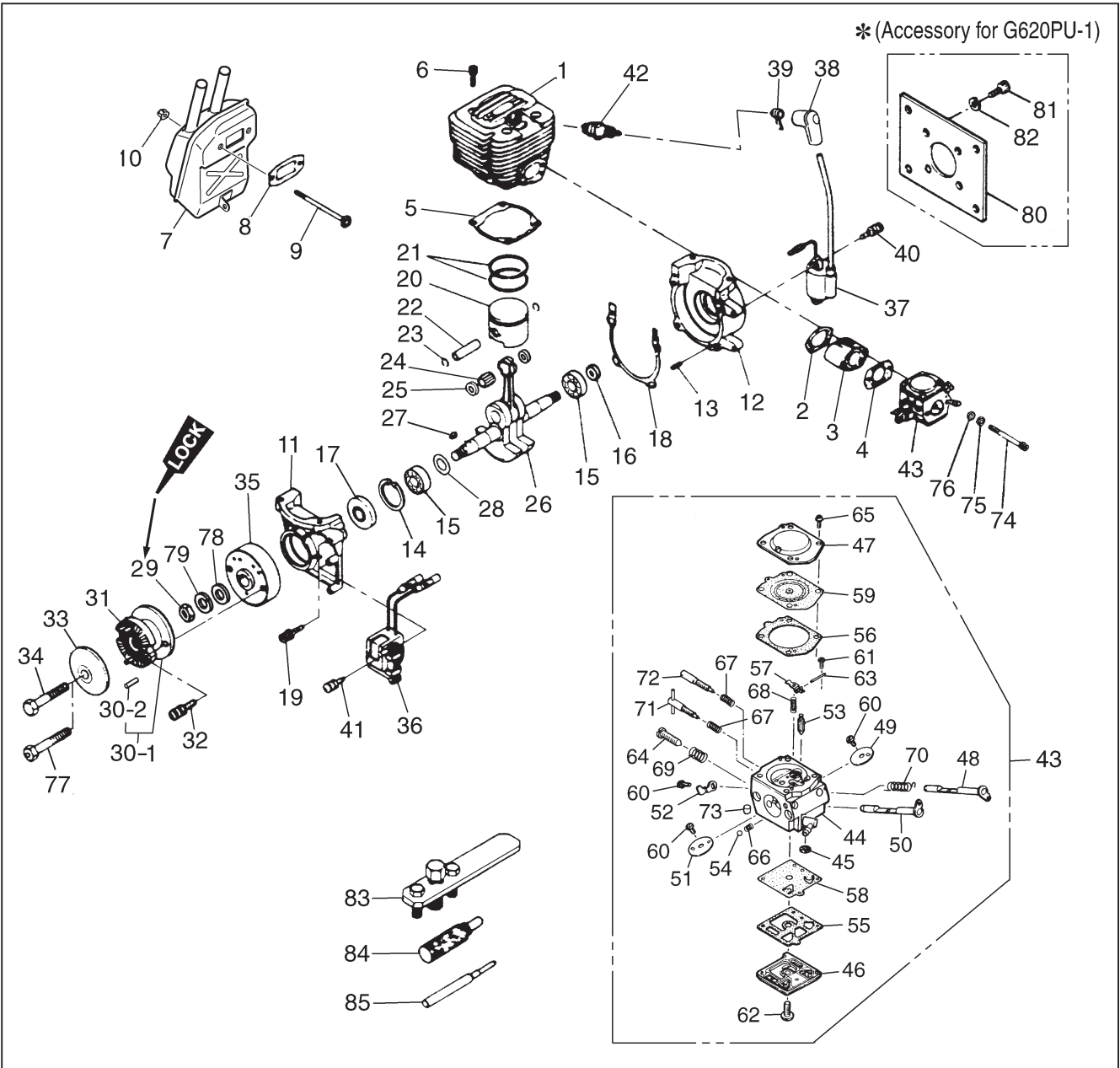
Model	G620PU · G620PU-1
Type	Air cooled two stroke cycle gasoline engine
Displacement	62.0cc (3.78cu. in)
Bore x Stroke	47.5mm x 35mm (1.87 in x 1.38 in)
Compression ratio	8.2 : 1
Maximum Output	5.7 PS/9500rpm [4.9 PS/9500rpm with Muffler]
Operating engine speed	2000 ~ 10000rpm
Weight	2.0kg (4.4lbs) [2.3kg (5.1lbs) with muffler]
Ignition system	CDI type Flywheel magneto
Carburetor	WALBRO HDA-48D
Fuel	Gasoline oil mixture 25 ~ 40 : 1
Spark plug	CHAMPION RCJ-7Y
Recommended prop sizes (inch)	22 x 6 ~ 8, 20 x 7 ~ 10, 18 x 8 ~ 12

Specifications are subject to change without notice.

11. Parts List

G620PU, G620PU-1

* (Accessory for G620PU-1)



G620PU, G620PU-1

Index No.	Parts No.	Description	Q' ty /unit	Index No.	Parts No.	Description	Q' ty /unit
1	3366-12116	Cylinder	1	49	3366-81340	• Valve, throttle	1
2	848C9014B3	Gasket,insulator	1	50	3356-81170	• Shaft assy, choke	1
3	2618-14120	Insulator	1	51	2629-81180	• Valve, choke	1
4	848C9014C2	Gasket,carburetor	1	52	3350-81190	• Stop, throttle	1
5	2616-14211	Gasket,cylinder base	1	53	3356-81310	• Valve, inlet	1
6	3310-12281	Bolt	4	54	3350-81220	• Ball, friction	1
7	2629-15111	Muffler	1	55	3350-81230	• Gasket, pump	1
8	3356-15210	Gasket,muffler	1	56	3350-81240	• Gasket, diaphragm	1
9	T2100-15220	Bolt	2	57	3350-81250	• Lever, metering	1
10	2850-15230	Nut	2	58	2618-81260	• Diaphragm, pump	1
11,12	2629-21100	Crankcase comp.	1	59	3350-81270	• Diaphragm assy	1
13	2629-21130	• Pin	3	60	2880-81470	• Screw, valve	3
14	04065-03515	Snap ring	1	61	3310-81240	• Screw, metering lever	1
15	06030-06202	Bearing	2	62	1491-81130	• Screw, pump cover	1
16	1520-21220	Oil seal	1	63	3310-81250	• Pin, metering lever	1
17	1400-21220	Oil seal	1	64	2630-81330	• Screw, idle speed	1
18	2629-21311	Gasket,crankcase	1	65	3310-81351	• Screw assy	4
19	3350-21320	Bolt	4	66	3350-81350	• Spring, friction	1
20	2618-41112	Piston	1	67	1491-81160	• Spring, needle adjust	2
21	2618-41210	Ring,piston	2	68	3350-81370	• Spring, metering lever	1
22	3366-41310	Pin,piston	1	69	3350-81380	• Spring, idle speed	1
23	3350-41320	Snap ring	2	70	2629-81390	• Spring, throttle return	1
24	1400-41410	Needle bearing	1	71	2629-81411	• needle, high speed	1
25	2616-41510	Thrust washer	2	72	2629-81420	• needle, idle	1
26	2629-42002	Crankshaft comp.	1	73	1480-81420	• plug, welch	1
27	1000-43240	Key	1	74	2629-82210	Bolt	2
28	1300-42410	Shim	0~2	75	01641-20508	Washer	2
29	1100-43231	Nut	1	76	01601-20513	Washer	2
30-1	2628-51101	Hub,propeller comp. for G620PU-1	1	77	2629-91510	Bolt, L50	1
30-2	04025-00312	• Pin for G620PU-1	2	78	01641-21016	Washer	1
31	2629-51111	Hub,propeller comp. for G620PU	1	79	0290-21025	Washer	1
32	3544-11510	Bolt	2	80	2628-91110	Mount	1
33	2629-51310	Washer,hub	1	81	01252-30614	Bolt	4
34	2629-51410	Bolt, L45	1	82	0290-20615	Washer	4
35	1490-71110	Rotor	1	83	1490-96101	Puller assy (Optional)	1
36	2629-71210	Source coil	1	84	3350-96220	Stopper (Optional)	1
37	2629-71311	Ignition coil	1	85	3356-96230	Guide, piston pin (Optional)	1
38	2850-72110	Cap,plug	1				
39	1400-72121	Spring,plug cap	1				
40	0263-30416	Screw	2				
41	0260-30422	Screw	2				
42	3699-90032	Spark plug, RCJ-7Y	1				
43	2629-81004	Carburetor assy, HDA-48D	1				
44		• Body assembly	1				
45	3306-81380	• Screen, inlet	1				
46	3350-81130	• Cover, pump	1				
47	3350-81140	• Cover, diaphragm	1				
48	2629-81150	• Shaft assy, throttle	1				