

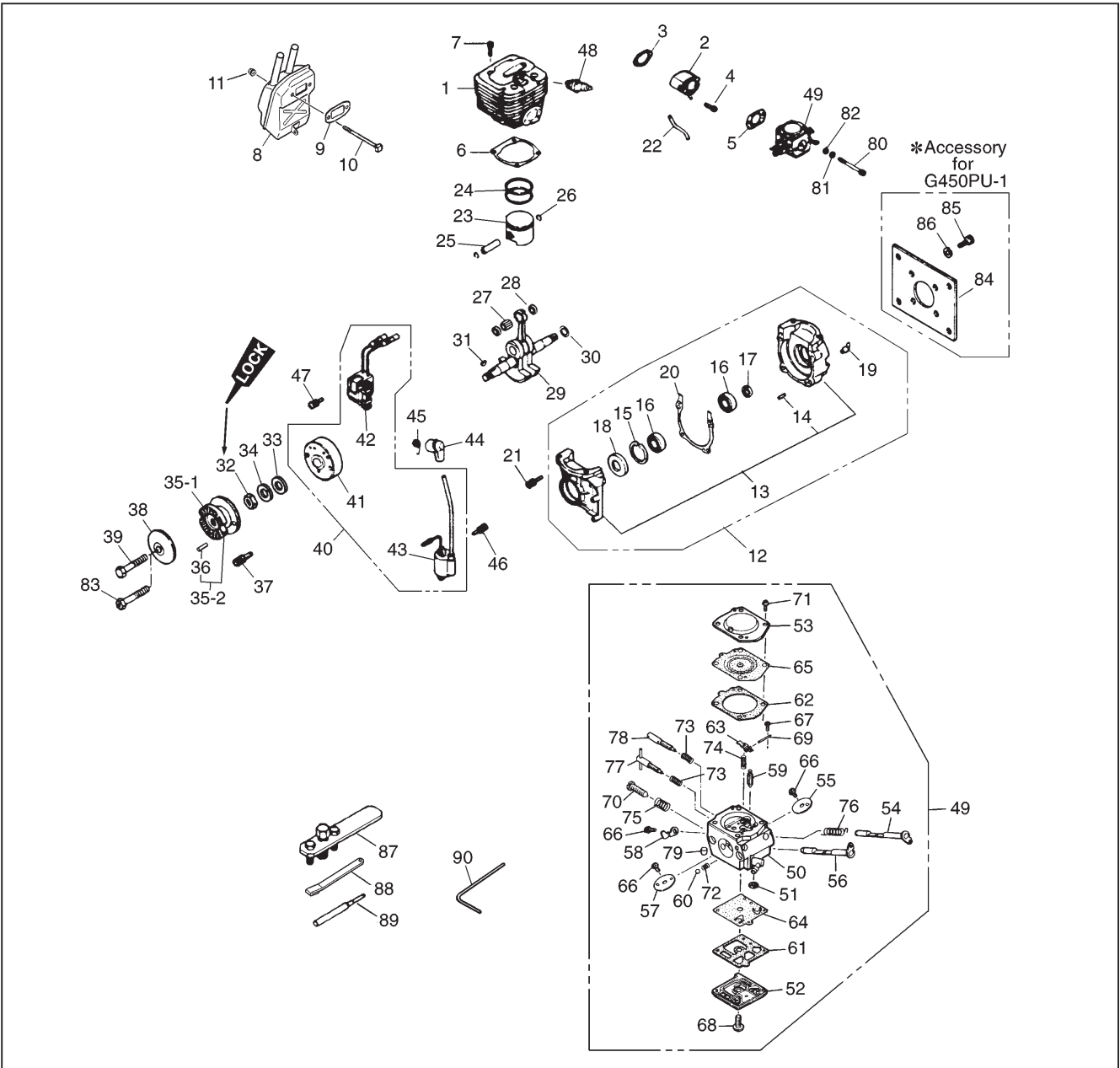
## 10. Specifications

Model .....	<b>G450PU · G450PU-1</b>
Type .....	Air cooled two stroke cycle gasoline engine
Displacement .....	45.0cc (2.74cu. in)
Bore x Stroke .....	43mm x 31mm (1.69 in x 1.22 in)
Compression ratio .....	7.9 : 1
Maximum Output (NET).....	2.21kW
Operating engine speed .....	2000 ~ 10000rpm
Weight .....	2.1kg
Ignition system .....	CDI type Flywheel magneto
Carburetor .....	WALBRO HDA-48D
Fuel .....	Gasoline oil mixture 25 ~ 40 : 1
Spark plug .....	CHAMPION RCJ-7Y
Recommended prop sizes (inch) .....	20 x 7 ~ 10, 18 x 8 ~ 12

Specifications are subject to change without notice.

## 11. Parts List

### G450PU, G450PU-1



**G450PU, G450PU-1**

Index No.	Parts No.	Description	Q' ty /unit	Index No.	Parts No.	Description	Q' ty /unit
1	2817-12111	Cylinder	1	48	3699-90032A	Spark plug RCJ-7Y	1
2	2817-14110	insulator	1	49	2629-81004	Carburetor assy, HDA-48D	1
3	2817-14121	Gasket, cyl	1	50		• Body assembly	1
4	4820-13180	Bolt, M5xL20 T27	2	51	3306-81380	• Screen, inlet	1
5	898C9014C2	Gasket, carb	1	52	3350-81130	• Cover, pump	1
6	2817-14211	Gasket, base	1	53	3350-81140	• Cover, diaphragm	1
7	4820-13180	Bolt, M5xL20 T27	4	54	2629-81150	• Shaft assy, throttle	1
8	2817-15111	Muffler	1	55	3366-81340	• Valve, throttle	1
9	3356-15210	Gasket	1	56	3356-81170	• Shaft assy, choke	1
10	T2100-15220	Bolt	2	57	2629-81180	• Valve, choke	1
11	2850-15230	Nut	2	58	3350-81190	• Stop, throttle	1
12	2817-21001	Crankcase ass'y	1	59	3356-81310	• Valve, inlet	1
13	2817-21101	• Crankcase comp.	1	60	3350-81220	• Ball, friction	1
14	2629-21130	•• Pin	3	61	3350-81230	• Gasket, pump	1
15	04065-03515	• Snap ring	1	62	3350-81240	• Gasket, diaphragm	1
16	06030-06202	• Bearing	2	63	3350-81250	• Lever, metering	1
17	1520-21220	• Seal	1	64	2618-81260	• Diaphragm, pump	1
18	1400-21220	• Seal	1	65	3350-81270	• Diaphragm assy	1
19	2670-21250	• Elbow	1	66	2880-81470	• Screw, valve	3
20	2817-21311	• Gasket	1	67	3310-81240	• Screw, metering lever	1
21	4820-13180	Bolt, M5xL20 T27	4	68	1491-81130	• Screw, pump cover	1
22	2817-22210	Pipe	1	69	3310-81250	• Pin, metering lever	1
23	2670-41114	Piston	1	70	2630-81330	• Screw, idle speed	1
24	2670-41211	Ring	2	71	3310-81351	• Screw assy	4
25	3350-41310	Pin	1	72	3350-81350	• Spring, friction	1
26	3350-41320	Snap ring	2	73	1491-81160	• Spring, needle adjust	2
27	1400-41410	Bearing	1	74	3350-81370	• Spring, metering lever	1
28	2670-41510	Washer	2	75	3350-81380	• Spring, idle speed	1
29	2817-42001	Crankshaft comp.	1	76	2629-81390	• Spring, throttle return	1
30	1300-42410	Shim	0~2	77	2629-81411	• needle, high speed	1
31	1000-43240	Key	1	78	2629-81420	• needle, idle	1
32	1100-43231	Nut	1	79	1480-81420	• plug, welch	1
33	01641-21016	Washer	1	80	01252-30550	Bolt M5xL75	2
34	0290-21025	Washer	1	81	01601-20513	Washer	2
35-1	2629-51111	Hub for G450PU	1	82	01641-20508	Washer	2
35-2	2628-51101	Hub for G450PU-1	1	83	2629-91510	Bolt L50	1
36	04025-00312	• Pin for G450PU-1	2	84	2628-91110	Mount	1
37	3544-11510	Bolt	2	85	01252-30614	Bolt	4
38	2629-51310	Washer	1	86	0290-20615	Washer	4
39	2629-51410	Bolt L45	1	87	1490-96101	Puller ass'y (Optional)	1
40	2629-71000	Magneto ass'y	1	88	2670-96220	Stopper (Optional)	1
41	1490-71110	• Rotor	1	89	3356-96230	Guide (Optional)	1
42	2629-71210	• Source coil	1	90	2670-96310	Wrench (Optional)	1
43	2629-71311	• Ignition coil	1				
44	2850-72110	Cap	1				
45	1400-72121	Spring	1				
46	0263-30416	Screw	2				
47	0260-30422	Screw	2				